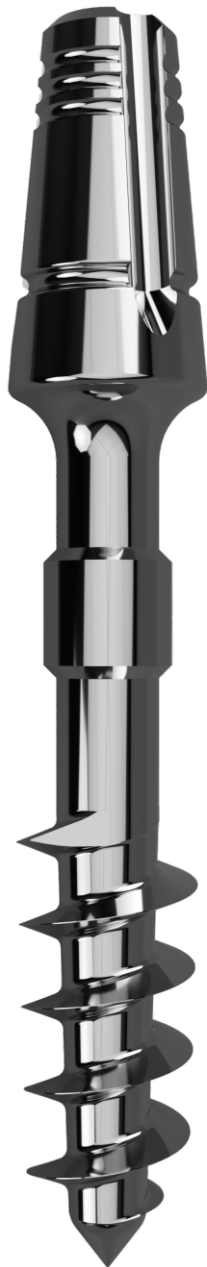


BICORTICAL IMPLANT



SURFACE

Implants surface is polished for protection from bacteria when placed in infected sockets

FEATURES

- Especially Effective In Bone With Bicortical Engagement
- Avoids Bone Grafting
- Immediate Loading
- Can Be Place In Extraction Sockets
- Material Used Titanium Grade 5 ELI
- Bendable

EN ISO 13485 Certified Company

Kamal Encon Industries Ltd.

Plot No. 917, Sector 68, IMT – Faridabad, Haryana - 121001, India

+91-129-4198707 | +91-7065950917 | info@kamalmedtech.com | www.kamamedtech.com

